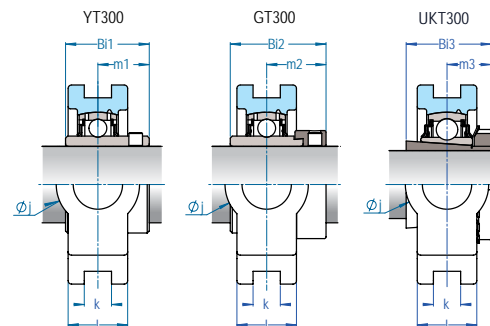
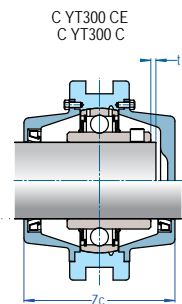
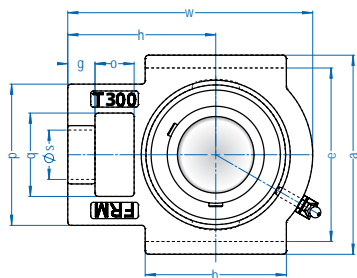


T 300

mancal tipo TENSOR
serviço PESADO



Caixa	Eixo		Dimensão nominal (mm)														Peso (kg)				D	Rolamentos								
	Ø pol	Ø mm	o	g	p	q	s	b	k	e	a	w	l	j	h	t	Zc	YT3	CYT3 C(E)	GT3		UKT3	Y 300		G 300		UK 300			
																						Bi1	m1	Bi2	m2	Ø Eixo	Bucha	Bi3	m3	
T 305	1	25	16	12	62	36	26	65	12,0	80,0	89	122	26	36	76	2	75	1,40	2,20	1,40	1,40	62,0	38,0	23,0	46,8	30,1	3/4 20	HE2305 H2305	35,0	21,5
T 306	1-3/16	30	18	14	70	41	28	74	16,0	90,0	100	137	28	41	85	2	80	1,90	2,70	2,00	1,80	72,0	43,0	26,0	50,0	32,5	7/8 15/16 25	HS2306 HA2306 HS2306	38,0	23,0
T 307	1-1/4 1-7/16	35	20	15	84	50	30	84	16,0	100,0	111	145	32	45	89	3	95	2,50	3,50	2,50	2,40	80,0	48,0	29,0	51,6	33,3	1-1/8 30	HS2307 H2307	43,0	25,5
T 308	1-1/2	40	22	17	83	50	32	89	18,0	112,0	124	162	34	59	100	3	105	3,10	4,20	3,20	2,90	90,0	52,0	33,0	57,1	37,3	1-3/16 1-1/4	HA2307 HE2308	46,0	27,5
T 309	1-11/16 1-3/4	45	24	18	90	55	34	97	18,0	125,0	138	178	38	55	110	3	116	4,00	5,30	4,20	3,90	100,0	57,0	35,0	58,7	38,9	1-5/16 35	HA2308 H2308	50,0	30,0
T 310	1-7/8 1-15/16	50	27	20	98	61	37	106	20,0	140,0	151	191	40	61	117	3	116	5,00	6,70	5,20	4,70	110,0	61,0	39,0	66,6	42,0	7/161-1 1-11/16	HA2309 HA2310	55,0	32,0
T 311	2 2-3/16	55	29	21	105	66	39	115	22,0	150,0	163	207	44	66	127	4	140	6,10	8,90	6,50	5,90	120,0	66,0	41,0	73,0	45,2	1-3/4 45	HE2310 H2310	59,0	33,5
T 312	2-1/4 2-5/16 2-7/16	60 65	31	23	113	71	41	123	22,0	160,0	178	220	46	71	135	4	145	7,70	12,50	8,00	7,10	130,0	71,0	45,0	79,4	48,5	1-7/8 1-15/16	HS2311 HA2311	62,0	36,5
T 313	2-1/2	65	32	25	119	70	43	134	26,0	170,0	190	242	50	80	146	4	155	9,80	14,80	10,20	9,30	140,0	75,0	45,0	85,7	53,2	50 2	H2311 HE2311	65,0	38,5
T 314	2-11/16	70	36	25	130	85	46	140	26,0	180,0	202	257	52	90	155	4	155	11,60	17,70	12,20	-	150,0	78,0	47,0	92,1	58,0	2-3/16 2-1/4	HA2313 HE2313	-	-
T 315	2-15/16 3	75	36	25	148	85	52	150	26,0	192,0	226	262	61	90	160	4	160	12,60	20,00	13,60	12,00	160,0	82,0	50,0	100,0	62,7	60 60	HE2315 H2315	73,0	42,5
T 316	3-3/16	80	42	28	150	98	53	160	30,0	204,0	230	282	60	102	174	4	160	15,90	26,50	17,10	14,90	170,0	86,0	52,0	106,4	65,9	70	HE2316 H2316	78,0	44,5
T 317	-	85	42	30	152	98	53	170	32,0	214,0	240	298	64	102	183	5	180	18,90	28,00	19,90	17,40	180,0	96,0	56,0	109,5	67,5	75 3	H2317 HE2317	82,0	48,0
T 318	3-7/16	90	46	30	160	106	57	175	32,0	228,0	255	312	66	110	192	5	180	21,80	32,50	23,70	20,10	190,0	96,0	56,0	115,9	72,3	80	H2318	86,0	48,0



T 300

mancal tipo TENSOR
serviço PESADO



Caixa	Eixo		Dimensão nominal (mm)															Peso (kg)				D	Rolamentos							
	Ø pol	Ø mm	o	g	p	q	s	b	k	e	a	w	l	j	h	t	Zc	YT3	CYT3 C(E)	GT3	UKT3		Y 300		G 300		UK 300			
																						Bi1	m1	Bi2	m2	Ø Eixo	Bucha	Bi3	m3	
T 319	-	95 100	46	31	169	106	57	180	35,0	240,0	270	327	72	110	197	5	180	25,90	33,30	27,40	25,70	200,0	103,0	62,0	122,3	83,4	3-1/4 85	HE2319 H2319	90,0	52,0
T 320	3-15/16 4	100	48	32	175	115	59	200	35,0	260,0	2290	345	75	115	210	5	205	30,80	46,50	32,70	30,50	215,0	108,0	66,0	128,6	78,6	3-1/2 90	HE2320 H2320	97,0	54,0
T 322	-	110	52	38	185	125	65	220	38,0	285,0	328	394	84	134	235	5	205	41,60	56,50	44,50	41,70	240,0	117,0	71,0	141,0	92,1	100 4	H2322 HE2322	105,0	61,0
T 324	-	120	60	42	210	140	70	230	45,0	320,0	355	432	90	140	267	5	230	54,60	74,30	-	54,10	260,0	126,0	75,0	-	-	110	H2324	112,0	65,5
T 326	-	130	65	45	220	150	75	240	50,0	350,0	385	465	100	150	285	6	235	69,00	92,00	-	69,00	280,0	135,0	81,0	-	-	115	H2326	121,0	68,0
T 328	-	140	70	50	230	160	80	255	50,0	380,0	415	515	100	155	315	6	240	84,00	111,00	-	84,00	300,0	145,0	86,0	-	-	125	H2328	131,0	73,0